

MODEST



WIŚNIOWSKI

GATES | DOORS | FENCES

MODEST GATE AND WICKET

Application: MODEST gates and wickets are a good choice for all types of private, public and industrial areas. Gates can be installed to enclose premises, gardens, parks, schools, kindergartens, stores, etc.



MODULARITY

SYSTEMS

The MODEST gates and wickets are compatible with the Vega B welded mesh panel and posts. The infill reinforcements for gates, wickets and fence panels are located at the same height which contributes to the harmonious look of the whole fence.



OPTIMISATION

OPTIMISED STRUCTURE

The frame of the gate and wicket is compatible with Vega B welded mesh panels. The panel is welded to the frame. Two opening directions are available: right inside (PW) or left inside (LW).



DURABILITY

CORROSION PROTECTED

The gates and wickets are hot-dip galvanised or hot-dip galvanised and polyester coated for corrosion protection.



UNIVERSAL INSTALLATION

UNIVERSAL INSTALLATION

The products feature simple structure ensuring quick and easy installation.



Product description

General description

The MODEST gate and wicket are system solutions designed for the home and for industry. Main posts and a set of hinges and lock are supplied with a gate or wicket. Corrosion protected by hot-dip galvanising or Duplex system: hot-dip galvanising + polyester coating.

Application

The MODEST gates and wickets are a good choice for all types of private, public and industrial areas. The gates can be installed to enclose premises, gardens, parks, schools, kindergartens, stores, etc.

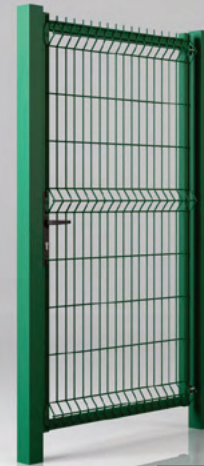
Technical characteristics

Leaf of gate and wicket

The gate and wicket frame is made of 40x40 [mm] sections. The leaf features a lock and hinges. Additionally, the double-leaf gate is equipped with drop bolt and stop plate. The leaf of gates and wickets is filled with Vega B welded mesh panels. The panels are welded from 5 [mm] wire. The panel is welded to the structure if viewed from the outside. The gate and wicket posts constitute an integral part of the product. The posts are designed to meet the strength requirements of the whole construction. The posts are topped with plastic caps. To manufacture the posts, 80x80 [mm] sections are used.



MODEST double-leaf gate filled with Vega B welded mesh panel



MODEST wicket filled with Vega B welded mesh panel

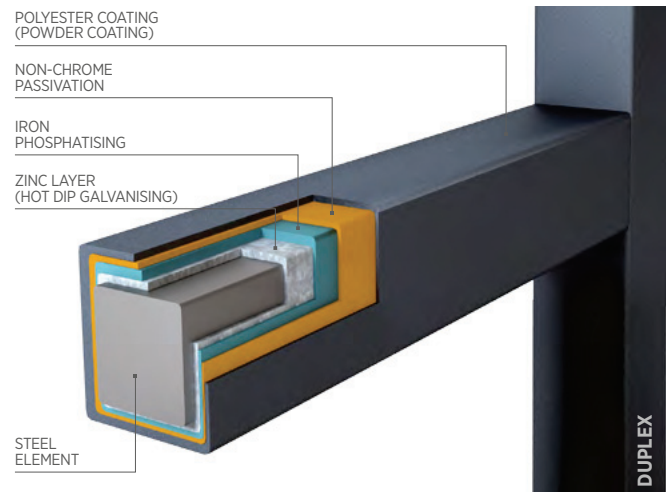
Standard colours

DUPLEX system

Combining hot-dip galvanising with powder coating in DUPLEX system ensures the extended durability of WIŚNIEWSKI fencing. Despite the weather conditions, we have a lasting peace of mind that WIŚNIEWSKI fencing will be visually appealing. The gates and wickets are available in hot-dip galvanised, or galvanised and polyester coated version. The standard colours are: RAL 6005 MATT, RAL 7016 MATT.



Note: The actual colours and gloss levels may vary from those shown in this brochure.



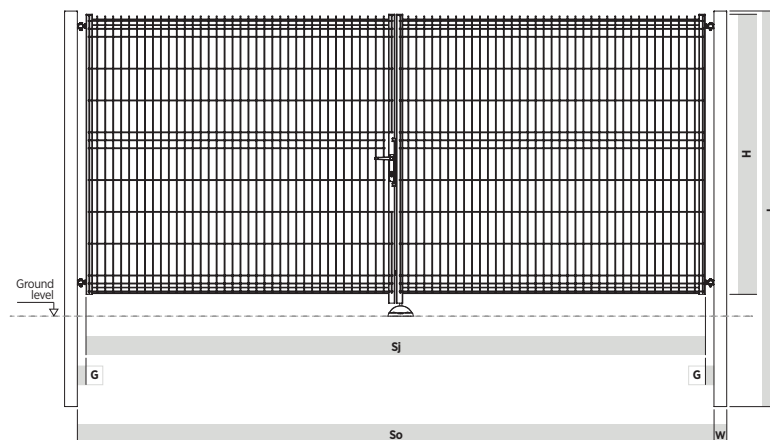


Gate dimensions and ordering dimensions. Installation dimensions.

MODEST DOUBLE-LEAF GATE



Gate ordering width (So) [mm]	Gate width (H) [mm] (leaf height)	Clear width (Sj) [mm]	Total width [mm]	Leaf height from the ground level [mm]	Post dimensios [mm]	Post height (L) [mm]	Gate leaf frame [mm]	Clearance between gate edge and post edge (G) [mm]
3000	1230, 1530 1730, 2030	$Sj = So - 180$	$So + 160$	$H + 105$	80x80	$H + 770$	40x40	55
3500		$Sj = So - 180$	$So + 160$	$H + 105$	80x80	$H + 770$	40x40	55
4000		$Sj = So - 180$	$So + 160$	$H + 105$	80x80	$H + 770$	40x40	55



- So - width between posts (ordering dimension),
- Sj - clear width after the gate installation,
- H - gate leaf height,
- L - total post height,
- W - post dimensions,
- G - clearance between gate edge and post edge.

MODEST double-leaf gate
view from the inside

Dimensions of the MODEST gate

MODEST DOUBLE-LEAF GATE			
Leaf height (H) in [mm]	Leaf width (So) in [mm]		
	3000	3500	4000
1230	☑	☑	☑
1530	☑	☑	☑
1730	—	☑	☑
2030	—	☑	☑

☑ MODEST gate available. — Not available.



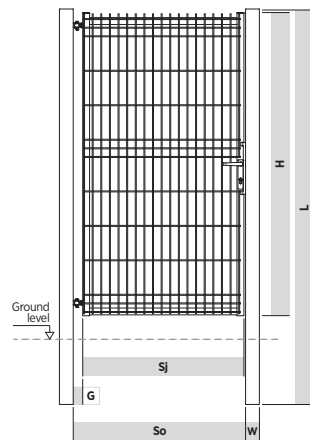
Gate dimensions and ordering dimensions. Installation dimensions.

MODEST WICKET



Wicket ordering width (So) [mm]	Wicket height (H) [mm] (leaf height)	Clear width (Sj) [mm]	Total width [mm]	Leaf height from the ground level [mm]	Post dimensions [mm]	Post height (L) [mm]	Wicket leaf frame [mm]	Clearance between wicket edge and post edge (G) [mm]
1000	1230, 1530	$Sj = So - 105$	$So + 160$	$H + 105$	80x80	$H + 570$	40x40	55
1200	1730, 2030	$Sj = So - 105$	$So + 160$	$H + 105$	80x80	$H + 570$	40x40	55

- So - width between posts (ordering dimension),
- Sj - clear width after the wicket installation,
- H - wicket leaf height,
- L - total post height,
- W - post dimensions,
- G - clearance between wicket edge and post edge.



MODEST wicket
view from the inside

Dimensions of the MODEST wicket

MODEST WICKET		
Leaf height (H) in [mm]	Leaf width (So) in [mm]	
	1000	1200
1230	<input checked="" type="checkbox"/>	<input checked="" type="checkbox"/>
1530	<input checked="" type="checkbox"/>	<input checked="" type="checkbox"/>
1730	<input checked="" type="checkbox"/>	<input checked="" type="checkbox"/>
2030	<input checked="" type="checkbox"/>	<input checked="" type="checkbox"/>

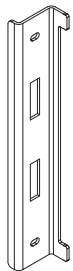
MODEST wicket available. Not available.



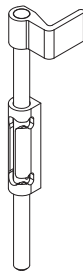
Equipment

	MODEST DOUBLE-LEAF GATE	MODEST WICKET
STRUCTURE		
Gate and wicket leaf frame made of 40x40 mm sections	☑	☑
Gate and wicket infill with Vega B welded mesh panel, welded to the frame	☑	☑
Gate handing: to the inside (W)	☑	-
Wicket handing: Right-handed inside (PW) or left-handed inside (LW)	-	☑
Posts are delivered with each gate and wicket. Posts are made of 80x80 mm sections and topped with plastic caps	☑	☑
Set of hinges and a lock	☑	☑
Lock strike (1)	☑	☑
Drop bolt for double-leaf gate (2)	☑	-
Leaf catch protecting the leaf from self-closing (3)	☑	-
Leaf stop plate / Drop bolt socket (4)	☑	-
Handles (5)	☑	☑
Handle plates (6)	☑	☑
Lock (7)	☑	☑
Hinges (4 pcs. / 2 pcs.) (8)	☑	☑
EXECUTION		
Corrosion protection: hot-dip galvanised	☑	☑
Corrosion protection: hot-dip galvanised + Standard RAL (RAL 6005 moss green, RAL 7016 anthracite grey)	☑	☑
Powder coated in any RAL colour	●	●
DIRECTIVES AND STANDARDS	MODEST gates and wickets are CE-marked and comply with EN 13241-1 standard.	

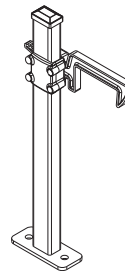
☑ Standard equipment. ● Option. - Not applicable.



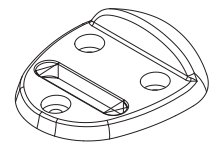
1. Lock strike



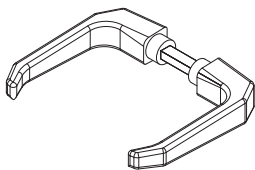
2. Drop bolt for double-leaf gate



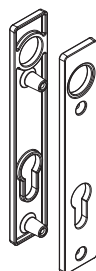
3. Leaf catch protecting the leaf from self-closing



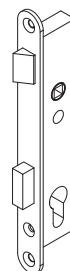
4. Leaf stop plate / Drop bolt socket



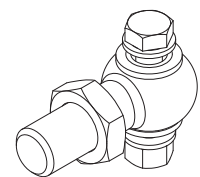
5. Handles



6. Handle plates



7. Lock

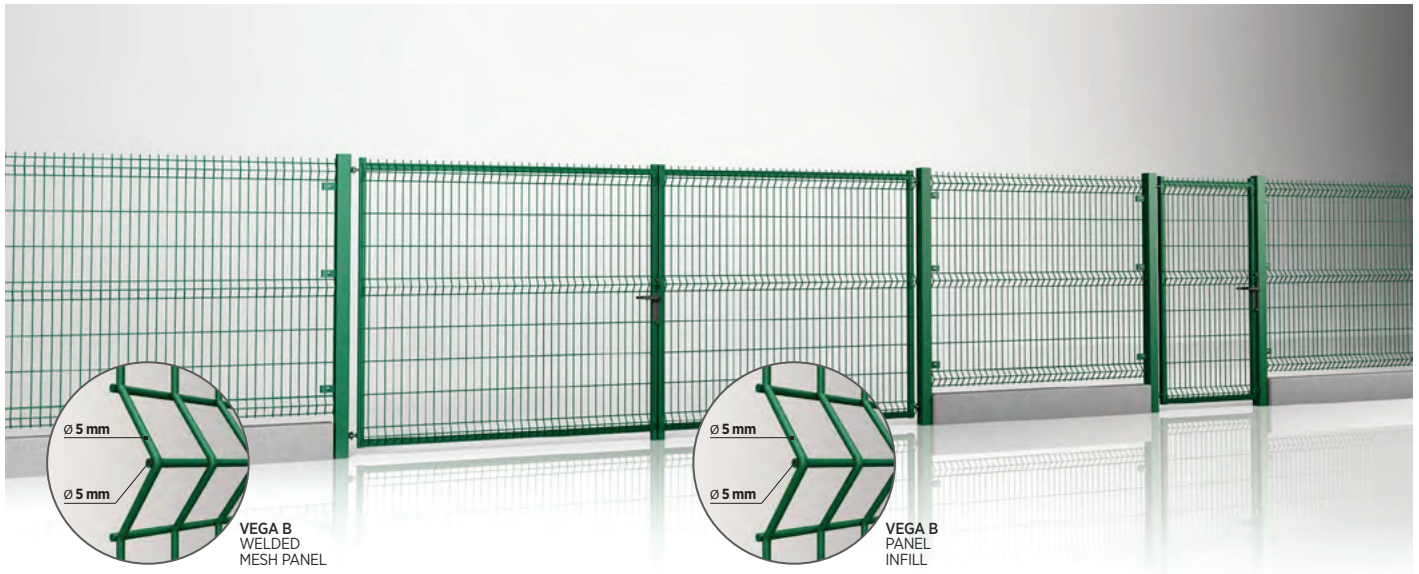


8. Hinges (4 pcs. / 2 pcs.)

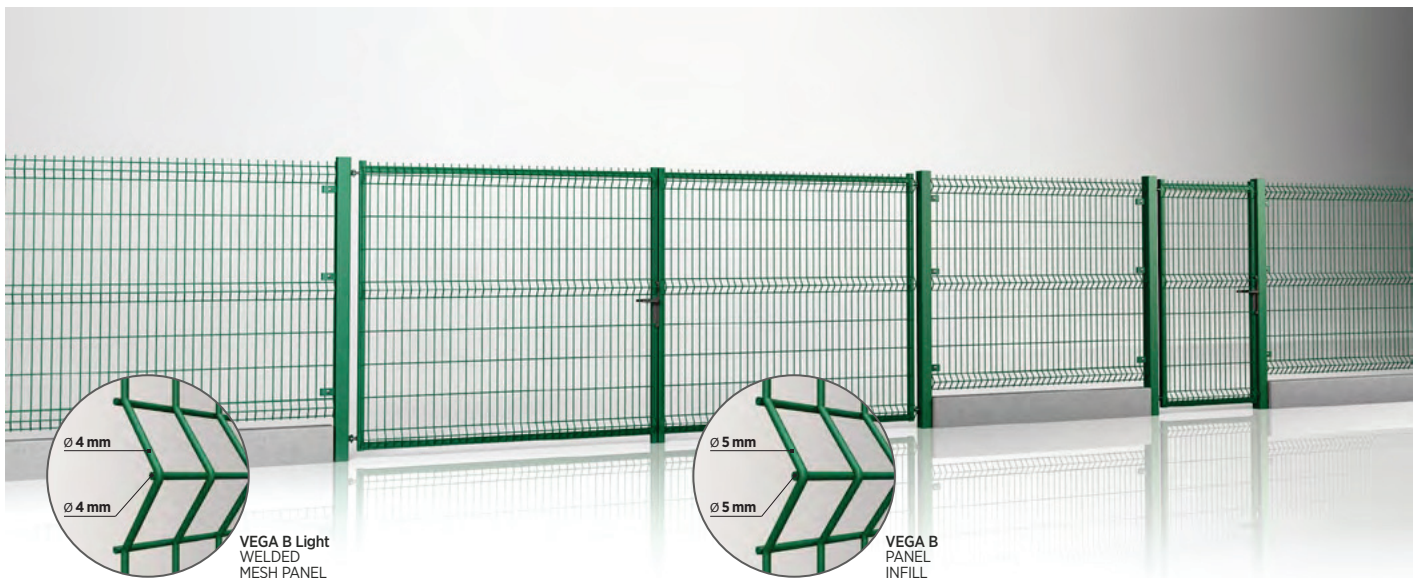
Create a complex system of industrial fencing



WIŚNIEWSKI fencing is a system solutions which ensure the complex perimeter protection. Our offer of modern steel fences, section-infill fences and welded wire mesh fences is dedicated for the house-building and for industry. The fences provide durability and high quality combined with elegance and style. WIŚNIEWSKI complex solutions give you a peace of mind especially when you need to enclose your property and ensure it is safe and visually appealing. **Take advantage of the whole offer and create your unique fencing.**



System fence with MODEST double-leaf gate and wicket filled with Vega B welded mesh panel



MODEST gate and wicket are also compatible with Vega B Light welded mesh panel.

System fence with MODEST double-leaf gate and wicket filled with Vega B welded mesh panel

MODEST/07.16/EN



WIŚNIEWSKI Sp. z o.o. S.K.A.
PL 33-311 Wielogłowy 153
Tel. +48 18 44 77 111
Fax +48 18 44 77 110
www.wisniewski.pl
N = 49° 40' 10" | E = 20° 41' 12"

Let us inspire you!
Discover more solutions by WIŚNIEWSKI!

